

**CALL FOR BIDS:
ASPHALT REPAIR RED LODGE AIRPORT**

Notice is hereby given that the Carbon County Joint Airport Board is seeking bids for repairs to the Red Lodge Airport Taxiways and apron and construction of a new hanger access taxi lane.

Pre-Bid Meeting: A mandatory pre-bid meeting will be held on April 17th at 1:30 pm at the Red Lodge Airport at 1 Airport Road, Red Lodge, MT 59068.

Specifications for the project may be examined or obtained at the Carbon County Clerk and Recorder's Office at 17 West 11th Street, Red Lodge, Montana 59068 or online <http://carbonmt.gov/rfps/>.

Questions may be directed to the Carbon County Commissioners at (406) 446 – 1595 or commissioners@co.carbon.mt.us.

No proposal may be withdrawn after the scheduled time for the public opening of proposals, which is scheduled for 10:30 a.m. MST on April 22, 2025. Bids may be mailed, or delivered to the Carbon County Clerk and Recorder, P.O. Box 887, 17 West 11th St., Red Lodge, Montana, 59068.

Carbon County reserves the right to reject any and all bids, or portions thereof. Bids will be reviewed for product quality and warranty, project completion timelines, as well as lowest bid.

Bids may be mailed or delivered to Carbon County Clerk and Recorder, PO Box 887, Red Lodge Montana, 59068 or left with the Clerk and Recorder's office at 17 West 11th Street in Red Lodge. Bids will be accepted until April 22nd at 10:30 a.m. and will be opened at that time.

Dated this 31st day of March, 2025

Carbon County Board of Commissioners
(Publish Carbon County News two times; April 3 and April 10)

ASPHALT REPAIR - RED LODGE AIRPORT

SCOPE of WORK to include:

- 1) Reconstruction of the primary connecting taxiway from the edge of the main runway to a line between Hanger 6 and Hanger 12 where a previous paving project ended; approximately 826 ft by 40 ft wide (approximately 4,130 sq yds).
 - i) Mill and Stockpile existing Asphalt
 - ii) Prepare existing gravel surface
 - iii) Prepare and pave the surface
 - iv) Paint taxiway centerline

- 2) Construct hangar access taxi lane of approximately 500 ft by 25 ft wide (approximately 1,400 sq yds) as presented in the airport layout depiction included in this bid packet.
 - i) Strip, stockpile, and place topsoil
 - ii) Excavate and prepare subgrade surface
 - iii) Place aggregate base course
 - iv) Prepare and pave the taxiway
 - v) Paint the taxiway centerline
 - vi) Seed, fertilize, and mulch disturbed ground

- 3) Asphalt repairs within the apron area and tie-down area. Crack seal full expanse of Apron.
 - i) Clean and prep the apron and tiedown area surface.
 - ii) Fill all cracks greater than (1/4-inch-wide) with a crack sealant per ASTM D6690. The crack sealant, preparation, and application shall be compatible with the surface treatment/overlay to be used. To minimize contamination of the asphalt with the crack sealant, underfill the crack sealant a minimum of 1/8 inch, not to exceed 1/4 inch. Any excess joint or crack sealer shall be removed from the pavement surface.

For any questions or site inspection call the Carbon County Commissioners, at 406-446-1595.

Pre-Bid Meeting: A mandatory pre-bid meeting will be held on April 17th at 1:30 pm at the Red Lodge Airport at 1 Airport Road, Red Lodge, MT 59068.

Bid Bond. Each bid shall be accompanied by a certified check drawn on a bank which is insured by the Federal Deposit Insurance Corporation or a bidder's bond executed by

a surety company authorized to do business in Montana, made payable to the Carbon County, in an amount not less than ten percent (10%) of the proposal sum as security that the successful bidder will enter into a Contract in accordance with the applicable documents of this Bid, and give bonds in the sum as hereafter provided.

Work Schedule. The effective date of the work to be performed will be agreed upon by the County and the Contractor.

Notice to Proceed. An initial Notice to Proceed (NTP) will be issued in writing by the County. Both parties shall mutually agree on the number of consecutive calendar days allowed to complete the work requested prior to Contractor's written acceptance of the work. The Contractor shall perform the work and submit an invoice with the itemized costs of the improvements. The itemized costs shall reflect the Bid Prices submitted. Should the work involve improvements that were not included in the Bid, the Contractor shall submit a proposal for the work and shall be agreed upon by the County prior to the work being performed. The County will process the invoice for payment within 45 days of acceptance of the work performed.

Period of Performance. The Period of Performance under this Contract shall commence upon the effective date of July 1, 2025. All work to be performed under this Contract shall be completed no later than October 31, 2025.

Bids must contain proof of Worker's Compensation Insurance, and Liability Insurance in the amount of at least \$2,000,000. Bidders must comply with Davis Bacon Wage Rates and use taxed fuel.

Carbon County reserves the right to reject any and all bids, or portions thereof. Bids will be reviewed for product quality and warranty, project completion timelines, as well as lowest bid.

Bids may be mailed or delivered to Carbon County Clerk and Recorder, PO Box 887, Red Lodge Montana, 59068 or left with the Clerk and Recorder's office at 17 West 11th Street in Red Lodge. Bids will be accepted until Tuesday April 22, 2025 at 10:30 a.m. and will be opened at that time.

Dated this 13th day of March, 2025

Carbon County Board of Commissioners
(Publish Carbon County News two times; April 3 & 10, 2025)

BID FORM: ASPHALT REPAIR RED LODGE AIRPORT

The undersigned Bidder hereby covenants and agrees to provide the scope of work as described in the bid documents:

Proposed construction timeline: _____ days

Bidder's Name _____

Bidder's Address

Bidder's Phone No. _____

Bidder's Signature _____



**Red Lodge Airport Proposed Improvements
Montana Aeronautics Grant/Loan - FY 2026**

Item No.	Quantity	Unit	Unit Description	2025	
				Unit Price (Figures)	Total Price (Figures)
#1 Connecting Taxiway					
101	1	LS	Mobilization (Shall not exceed 10% of Subtotal Price)		\$0.00
102	4,130	SY	Mill and Stockpile Existing Asphalt (3")		\$0.00
103	4,130	SY	Existing Gravel Surface Preparation		\$0.00
104	3.0	TON	Emulsified Asphalt Prime Coat (SS-1 or CSS-1), undiluted		\$0.00
105	784	TON	Asphalt Mixture Surface Course (3" P-403)		\$0.00
106	48.7	TON	Asphalt Mix Binder (PG 64-28)		\$0.00
107	450	SF	Taxiway Painting - Yellow, Full-Rate Application, Including Reflective Media		\$0.00
OFF - AIRSIDE TOTAL:					\$0.00
#2 New Taxilane					
201	1	LS	Mobilization (Shall not exceed 10% of Subtotal Price)		\$0.00
202	150	CY	Topsoil Stripping, Stockpiling, Placing (10' outside of RSA/TSA; 4" deep)		\$0.00
203	2,000	CY	Unclassified Excavation and Embankment (Pavement Section, Shoulder Grading, Drainage)		\$0.00
204	1,400	SY	Subgrade Surface Preparation (Estimated CBR = 3.0)		\$0.00
205	1,400	SY	Geotextile Stabilization Fabric, Class I, Woven		\$0.00
206	474	CY	Aggregate Base Course (12.2" P-208)		\$0.00
207	1.0	TON	Emulsified Asphalt Prime Coat (SS-1 or CSS-1), undiluted		\$0.00
208	317	TON	Asphalt Mixture Surface Course (3" P-403)		\$0.00
209	19.7	TON	Asphalt Mix Binder (PG 64-28)		\$0.00
210	300	SF	Taxiway Painting - Yellow, Full-Rate Application, Including Reflective Media		\$0.00
211	1.0	AC	Seeding, Fertilizing, and Mulching		\$0.00
OFF - AIRSIDE TOTAL:					\$0.00
#3 Asphalt Repairs					
301	1	LS	Mobilization (Shall not exceed 10% of Subtotal Price)		\$0.00
302	1	LS	Clean and prepare asphalt surface		\$0.00
303		CY	Crack Sealant		\$0.00
304		TON	Emulsified Asphalt Prime Coat (SS-1 or CSS-1), undiluted		\$0.00
305					\$0.00
306					\$0.00
307	300	SF	Taxiway Painting - Yellow, Full-Rate Application, Including Reflective Media		\$0.00
OFF - AIRSIDE TOTAL:					\$0.00

Paving Projects/Details

Legend

Red Pins:

- 1) Main taxiway, 826'x40'=3671 SY.
- 2) Old tie-down area, 79'x34'=2686 sq ft, 298 SY.
- 3) Old tie-down area, (59'x36')/2=1062 sq ft, 118 SY.
- 4) Old taxilane transition area, 33'x42'=1386 sq ft, 154 SY.
- 5) Existing taxilane to N.
- 6) Taxilane to N per RPA Master Plan ALP.
- 7) Taxilane transition radius to be added, if W half of old taxilane transition area (4) rmv'd and not replaced.

Green Pins:

- 1) H17D/E to H16F distance (wall to wall): 82'9"
- 2) H16F to H15F distance (gas meter to gas meter): 61'
- 3) H15F to H5 distance (wall to SW corner H5): 68'9"
- 4) H15F W wall to middle of corridor: 30'6"
- 5) H15F E wall to middle of corridor: 34'6"
- 6) H5 SW corner to middle of corridor: 34'6"
- 7) H9 SW corner of ste[s] to H15F NW corner: 70'4"
- 8) Transformer housing to W wall H14D: 182'7"
- 9) Offset taxilane ctrline to W boundary Row 1 lots: 64'
- 10) Offset taxilane ctrline to SW corner H9 stairs: 39'

Magenta Pins:

- 1) Possible culvert installation, 220'

Purple Pins:

Pin A to Pin E: 2.5% grade (approx.)

Pin A to Pin F (Main taxiway): 2.2% grade (approx.)

Note 1: 2.0% grade downhill S to N results in asphalt sfc ~1' abv natural terrain sfc.

Note 2: 1.8% grade downhill S to N results in asphalt sfc ~2' abv natural terrain sfc.

Pin A: N45.187516, W109.255156

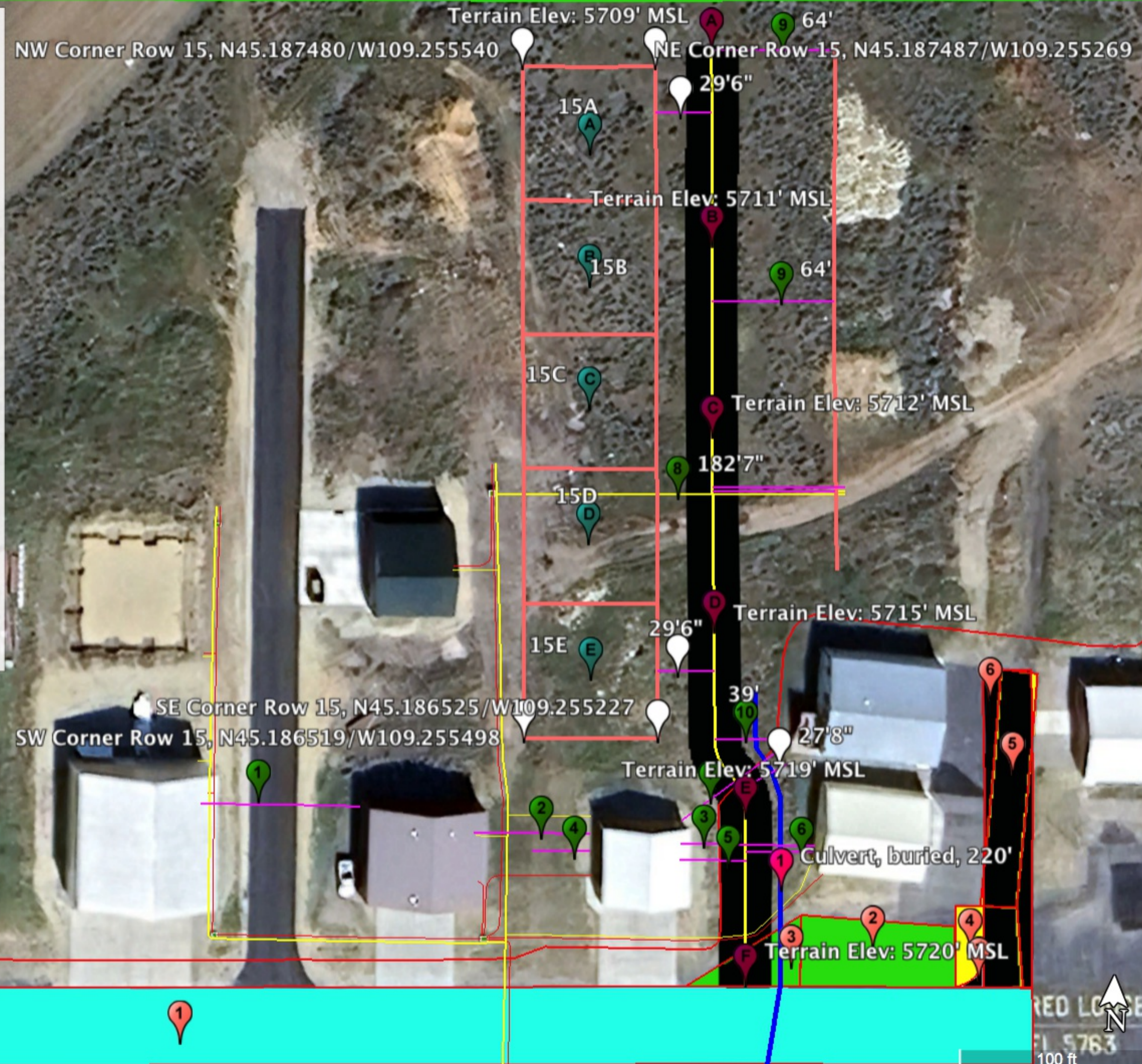
Pin B: N45.187235, W109.255144

Pin C: N45.186961, W109.255132

Pin D: N45.186683, W109.255120

Pin E: N45.186423, W109.255049

Pin F: N45.186184, W109.255039



Paving Projects/Details

Legend

Red Pins:

- 1) Main taxiway, 826'x40'=3671 SY.
- 2) Old tie-down area, 79'x34'=2686 sq ft, 298 SY.
- 3) Old tie-down area, (59'x36')/2=1062 sq ft, 118 SY.
- 4) Old taxilane transition area, 33'x42'=1386 sq ft, 154 SY.
- 5) Existing taxilane to N.
- 6) Taxilane to N per RPA Master Plan ALP.
- 7) Taxilane transition radius to be added, if W half of old taxilane transition area (4) rmv'd and not replaced.

Green Pins:

- 1) H17D/E to H16F distance (wall to wall): 82'9"
- 2) H16F to H15F distance (gas meter to gas meter): 61'
- 3) H15F to H5 distance (wall to SW corner H5): 68'9"
- 4) H15F W wall to middle of corridor: 30'6"
- 5) H15F E wall to middle of corridor: 34'6"
- 6) H5 SW corner to middle of corridor: 34'6"
- 7) H9 SW corner of ste[s] to H15F NW corner: 70'4"
- 8) Transformer housing to W wall H14D: 182'7"
- 9) Offset taxilane ctrline to W boundary Row 1 lots: 64'
- 10) Offset taxilane ctrline to SW corner H9 stairs: 39'

Magenta Pins:

- 1) Possible culvert installation, 220'

Purple Pins:

- Pin A to Pin E: 2.5% grade (approx.)
- Pin A to Pin F (Main taxiway): 2.2% grade (approx.)
- Note 1: 2.0% grade downhill S to N results in asphalt sfc ~1' abv natural terrain sfc.
- Note 2: 1.8% grade downhill S to N results in asphalt sfc ~2' abv natural terrain sfc.
- Pin A: N45.187516, W109.255156
- Pin B: N45.187235, W109.255144
- Pin C: N45.186961, W109.255132
- Pin D: N45.186683, W109.255120
- Pin E: N45.186423, W109.255049
- Pin F: N45.186184, W109.255039



SE Corner Row 15, N45.186525/W109.255227

N45.186519/W109.255498

Terrain Elev: 5719' MSL

Culvert, buried, 220'

Terrain Elev: 5720' MSL

Paving Projects/Details

Legend

Red Pins:

- 1) Main taxiway, 826'x40'=3671 SY.
- 2) Old tie-down area, 79'x34'=2686 sq ft, 298 SY.
- 3) Old tie-down area, (59'x36')/2=1062 sq ft, 118 SY.
- 4) Old taxilane transition area, 33'x42'=1386 sq ft, 154 SY.
- 5) Existing taxilane to N.
- 6) Taxilane to N per RPA Master Plan ALP.
- 7) Taxilane transition radius to be added, if W half of old taxilane transition area (4) rmv'd and not replaced.

Green Pins:

- 1) H17D/E to H16F distance (wall to wall): 82'9"
- 2) H16F to H15F distance (gas meter to gas meter): 61'
- 3) H15F to H5 distance (wall to SW corner H5): 68'9"
- 4) H15F W wall to middle of corridor: 30'6"
- 5) H15F E wall to middle of corridor: 34'6"
- 6) H5 SW corner to middle of corridor: 34'6"
- 7) H9 SW corner of ste[s] to H15F NW corner: 70'4"
- 8) Transformer housing to W wall H14D: 182'7"
- 9) Offset taxilane ctrline to W boundary Row 1 lots: 64'
- 10) Offset taxilane ctrline to SW corner H9 stairs: 39'

Magenta Pins:

- 1) Possible culvert installation, 220'

Purple Pins:

Pin A to Pin E: 2.5% grade (approx.)

Pin A to Pin F (Main taxiway): 2.2% grade (approx.)

Note 1: 2.0% grade downhill S to N results in asphalt sfc ~1' abv natural terrain sfc.

Note 2: 1.8% grade downhill S to N results in asphalt sfc ~2' abv natural terrain sfc.

Pin A: N45.187516, W109.255156

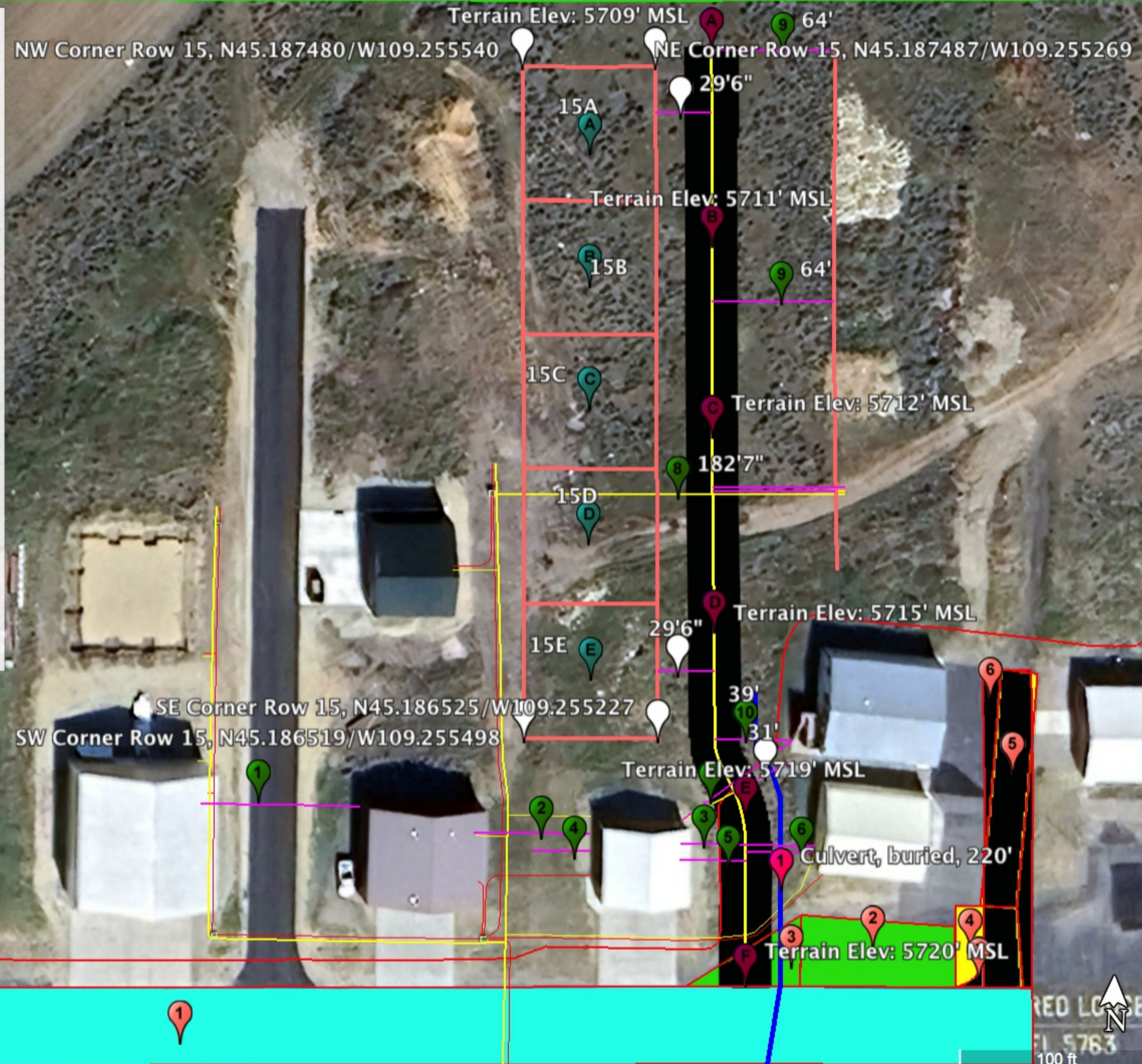
Pin B: N45.187235, W109.255144

Pin C: N45.186961, W109.255132

Pin D: N45.186683, W109.255120

Pin E: N45.186423, W109.255049

Pin F: N45.186184, W109.255039



Paving Projects/Details

Legend

Red Pins:

- 1) Main taxiway, 826'x40'=3671 SY.
- 2) Old tie-down area, 79'x34'=2686 sq ft, 298 SY.
- 3) Old tie-down area, (59'x36')/2=1062 sq ft, 118 SY.
- 4) Old taxilane transition area, 33'x42'=1386 sq ft, 154 SY.
- 5) Existing taxilane to N.
- 6) Taxilane to N per RPA Master Plan ALP.
- 7) Taxilane transition radius to be added, if W half of old taxilane transition area (4) rmv'd and not replaced.

Green Pins:

- 1) H17D/E to H16F distance (wall to wall): 82'9"
- 2) H16F to H15F distance (gas meter to gas meter): 61'
- 3) H15F to H5 distance (wall to SW corner H5): 68'9"
- 4) H15F W wall to middle of corridor: 30'6"
- 5) H15F E wall to middle of corridor: 34'6"
- 6) H5 SW corner to middle of corridor: 34'6"
- 7) H9 SW corner of ste[s] to H15F NW corner: 70'4"
- 8) Transformer housing to W wall H14D: 182'7"
- 9) Offset taxilane ctrline to W boundary Row 1 lots: 64'
- 10) Offset taxilane ctrline to SW corner H9 stairs: 39'

Magenta Pins:

- 1) Possible culvert installation, 220'

Purple Pins:

- Pin A to Pin E: 2.5% grade (approx.)
- Pin A to Pin F (Main taxiway): 2.2% grade (approx.)
- Note 1: 2.0% grade downhill S to N results in asphalt sfc ~1' abv natural terrain sfc.
- Note 2: 1.8% grade downhill S to N results in asphalt sfc ~2' abv natural terrain sfc.
- Pin A: N45.187516, W109.255156
- Pin B: N45.187235, W109.255144
- Pin C: N45.186961, W109.255132
- Pin D: N45.186683, W109.255120
- Pin E: N45.186423, W109.255049
- Pin F: N45.186184, W109.255039



**AFFIDAVIT AND INFORMATION REQUIRED OF BIDDERS
AFFIDAVIT OF NON-COLLUSION**

I hereby swear (or affirm) under the penalty; for perjury;

- (1) That I am the bidder (if the bidder is an individual), a partner in the bidder (if the bidder is a partnership), or an officer or employee of the bidding corporation having authority to sign on its behalf (if the bidder is a corporation);
- (2) That the attached bid or bids have been arrived at by the bidder independently, and have been submitted without collusion with, and without any agreement, understanding, or planned common course of action with any other vendor of materials, supplies, equipment or services described in the invitation to bid, designed to limit independent bidding or competition;
- (3) That the contents of the bid or bids have not been communicated by the bidder or its employees or agents to any person not an employee or agent of the bidder or its surety on any bond furnished with the bid or bids, and will not be communicated to any such person prior to the official opening of the bid or bids; and \
- (4) That I have fully informed myself regarding the accuracy of the statements made in this affidavit.

SIGNED: _____ **FIRM NAME:** _____

DATE: _____ **ADDRESS:** _____

----- State of Montana
County of _____

This instrument was signed and sworn to before me on _____
by _____
(Name of signer)

(Notary Signature)
[Affix seal/stamp to the left or below]

BIDDER'S E.I NUMBER: _____
(Number used on Employer's Quarterly Federal Tax Return, U.S. Treasury Department Form 941)